

A1

A2

A2

B2



A1

B1

B1

+ 1 cm

PATRON
Doublure Robe
(Réville-Tulle)

C1

B2

RE

C2

C1

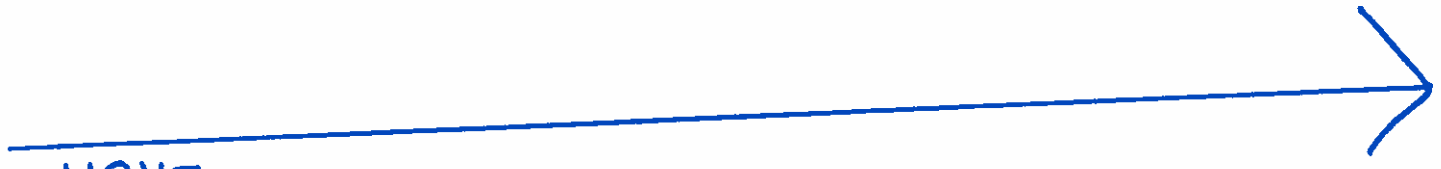


M

C2



D2



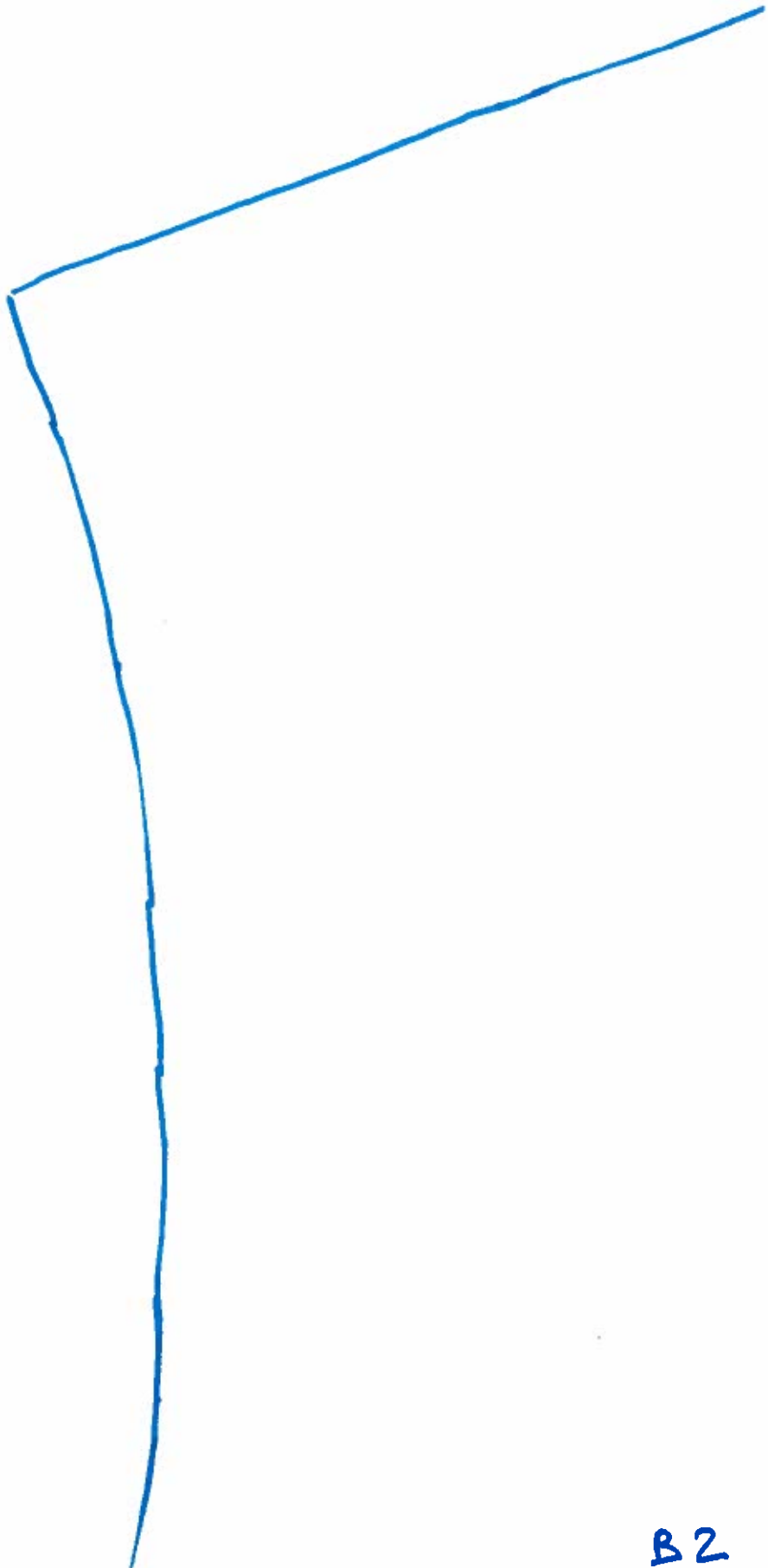
DROIT

PLI

+ 2 cm (ourlet)

A1

A2

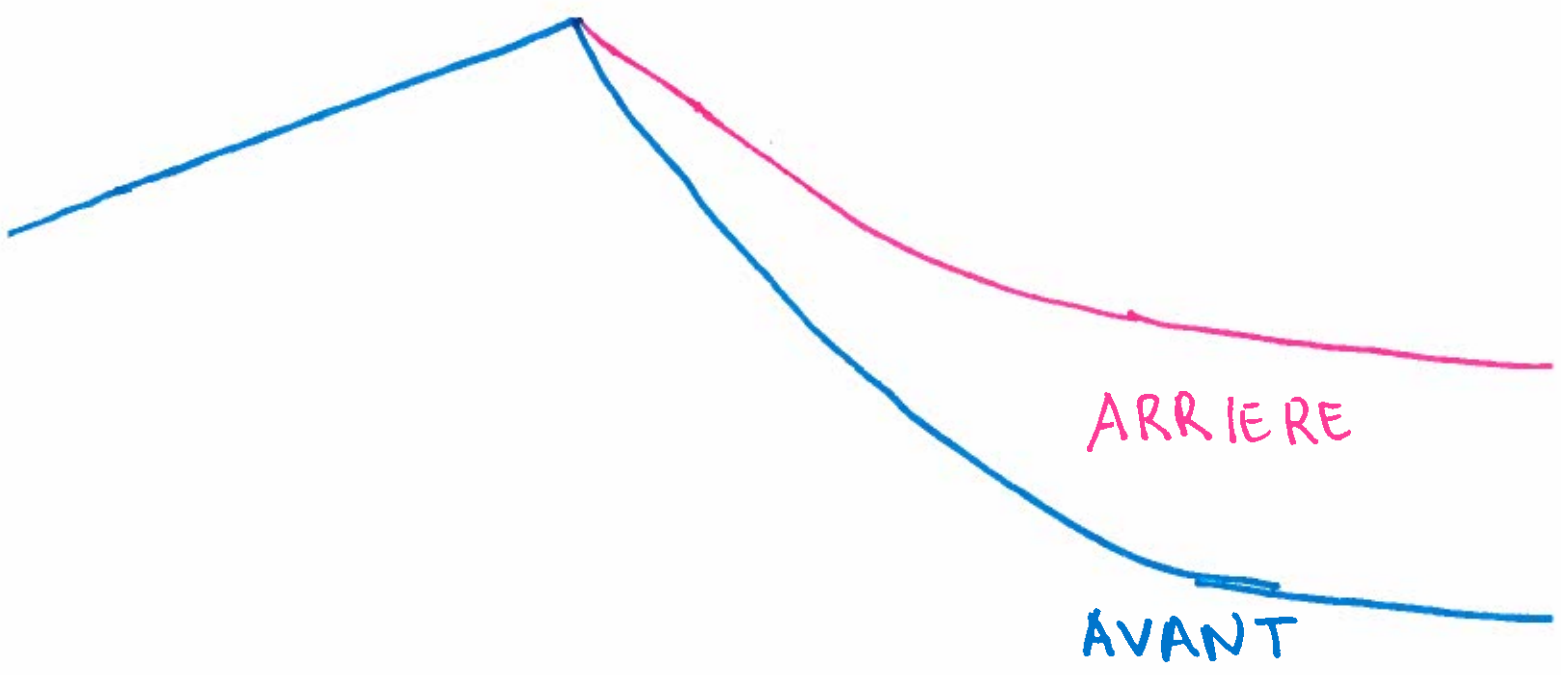


B1

B2

A 2

A 3



B 2

B 3



B 1

B 2



AVANT

ARRIÈRE

C 1

C 2

B 2

B 3

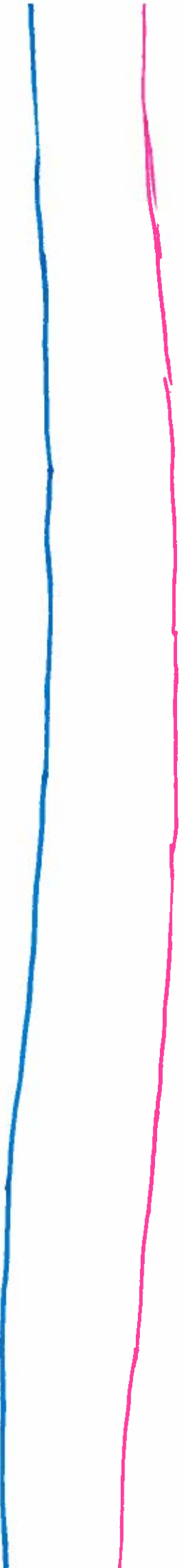
ROBE
RESILLE / TULLE
CORPS AVANT / ARRIERE

C2

C3

C 1

C 2



D 1

D 2

C 2

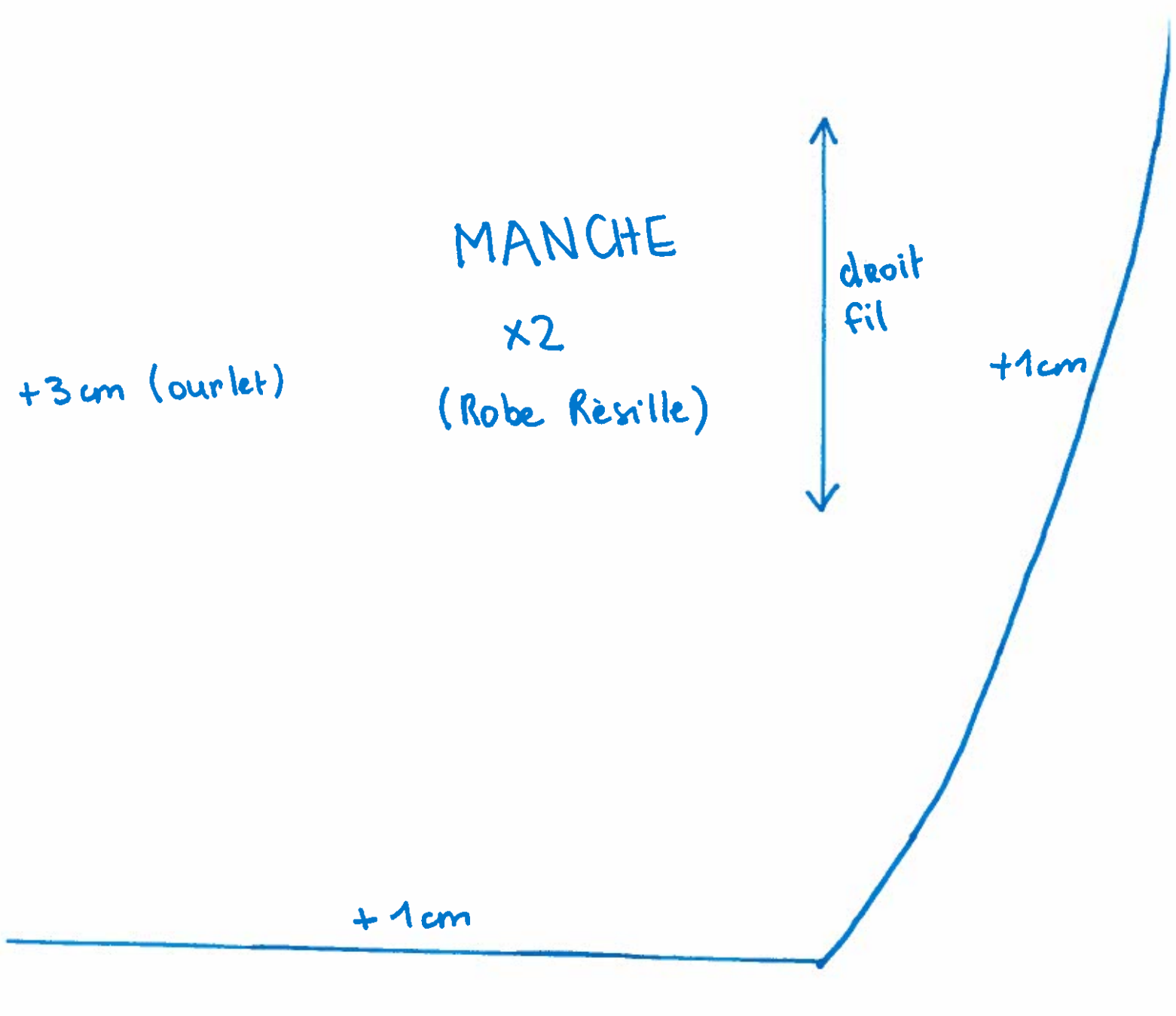
C 3



D 2

D 3

PLIURE



+ 3cm (ourlet)

MANCHE
x2
(Robe Résille)

droit fil

+ 1cm

+ 1cm