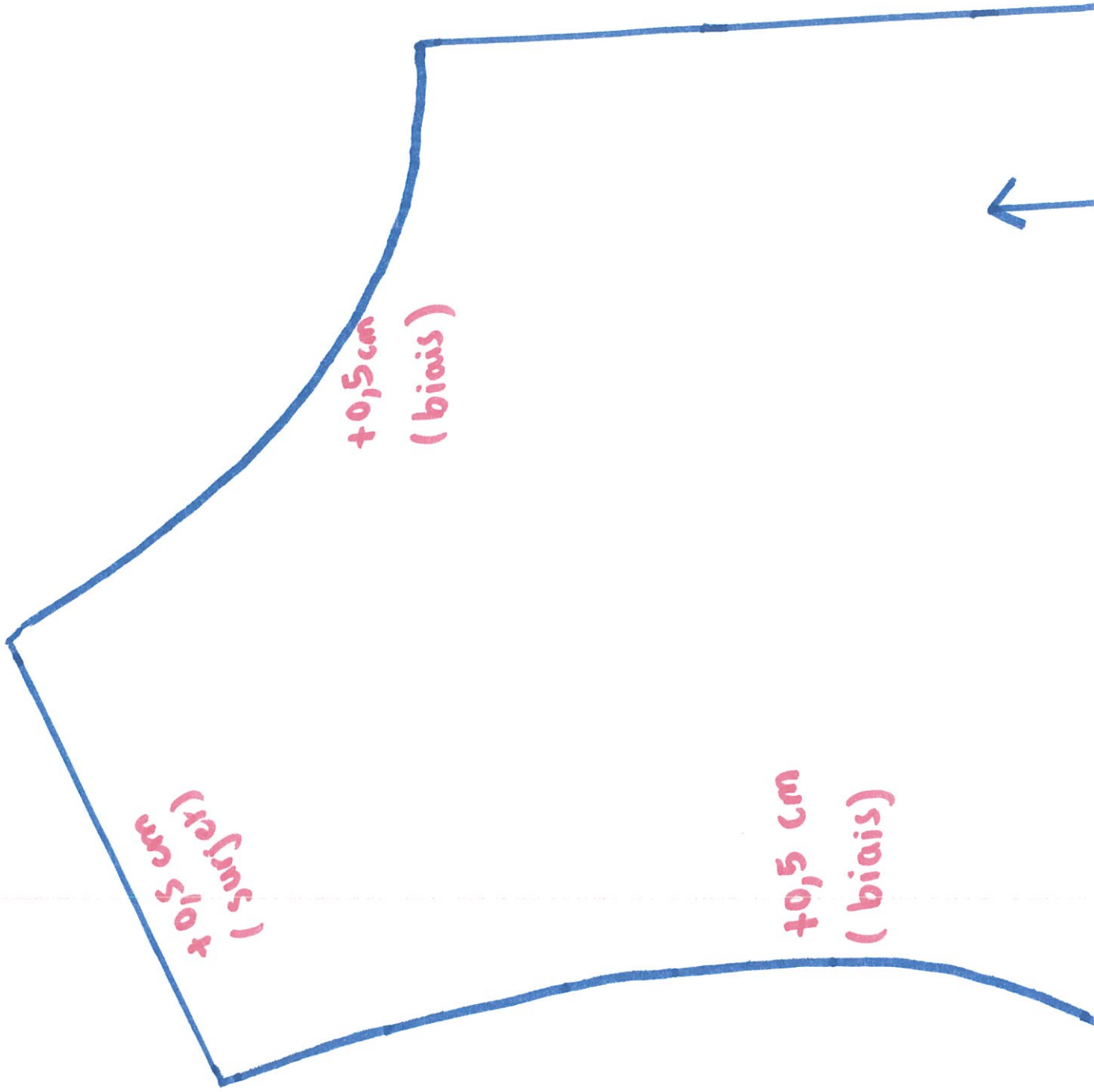


A1

A2



B1

B2

B2

C2

pliure

droit-fil

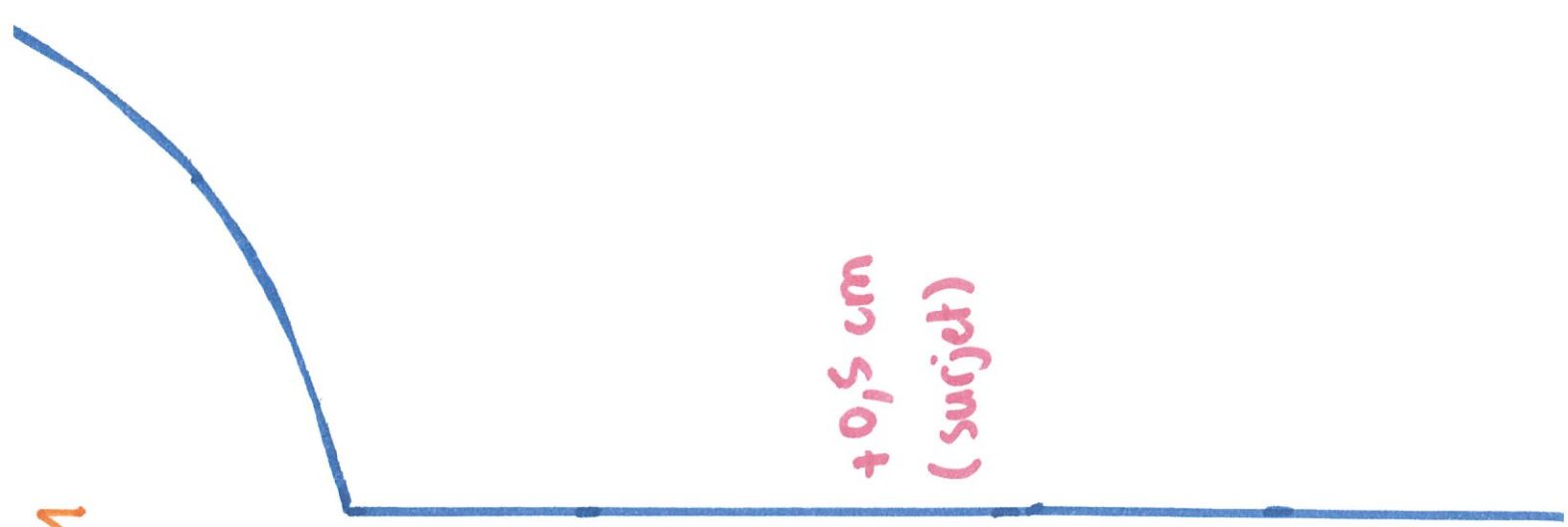
TOP Ailé

AVANT (x1)

B1

C1

+0,5 cm  
(surjet)



C2

D2



+ 1 cm (ourlet)

+ 0,5 cm  
(surjet)

C1

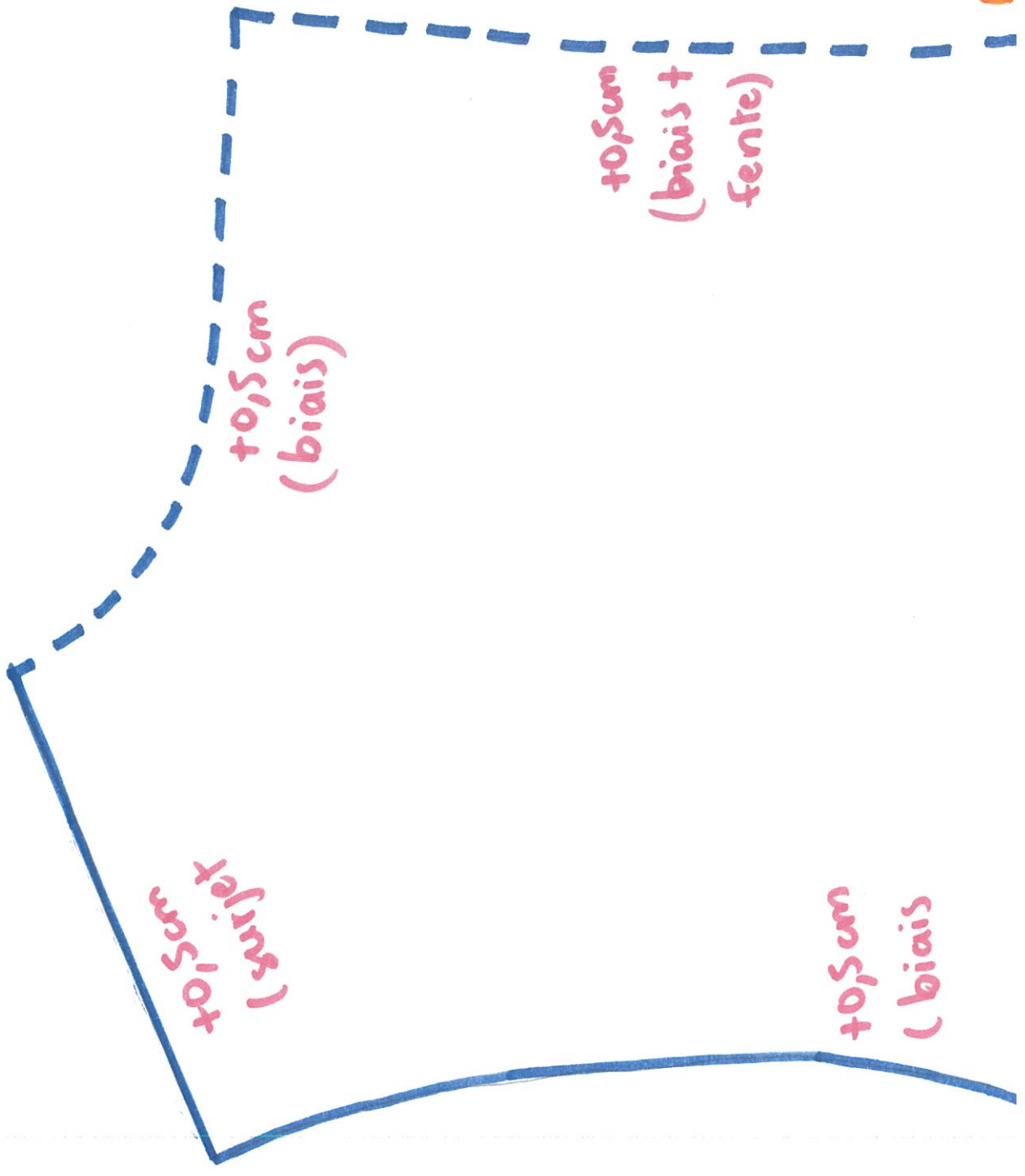
D1

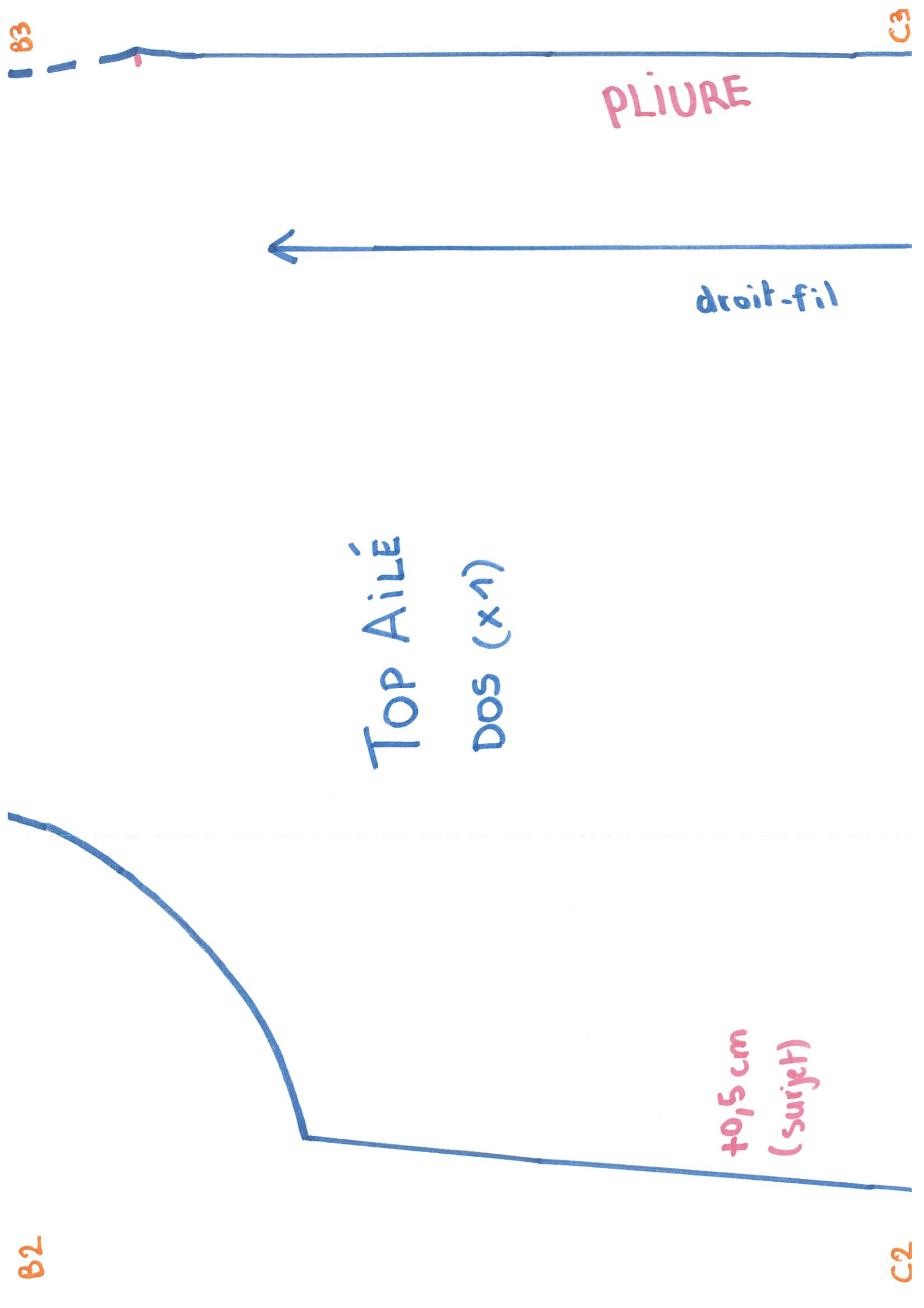
A2

A3

B2

B3





C3

D3

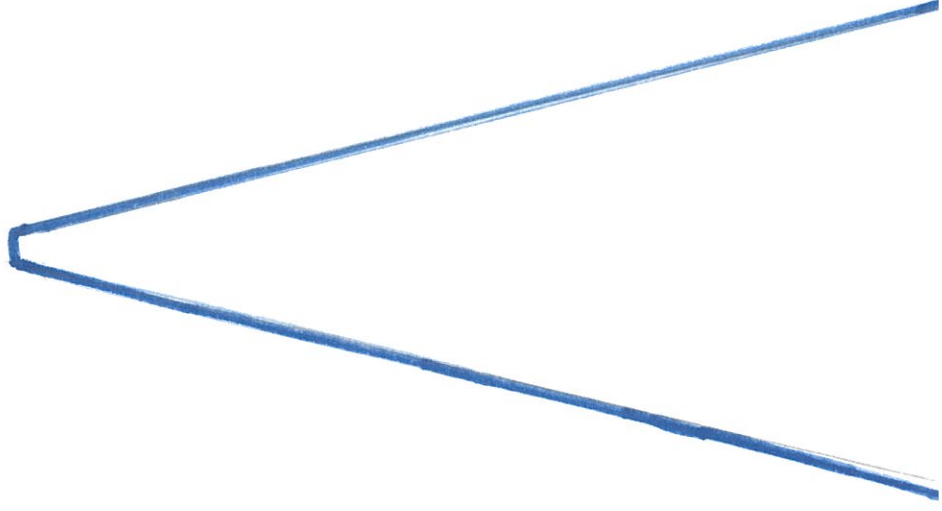


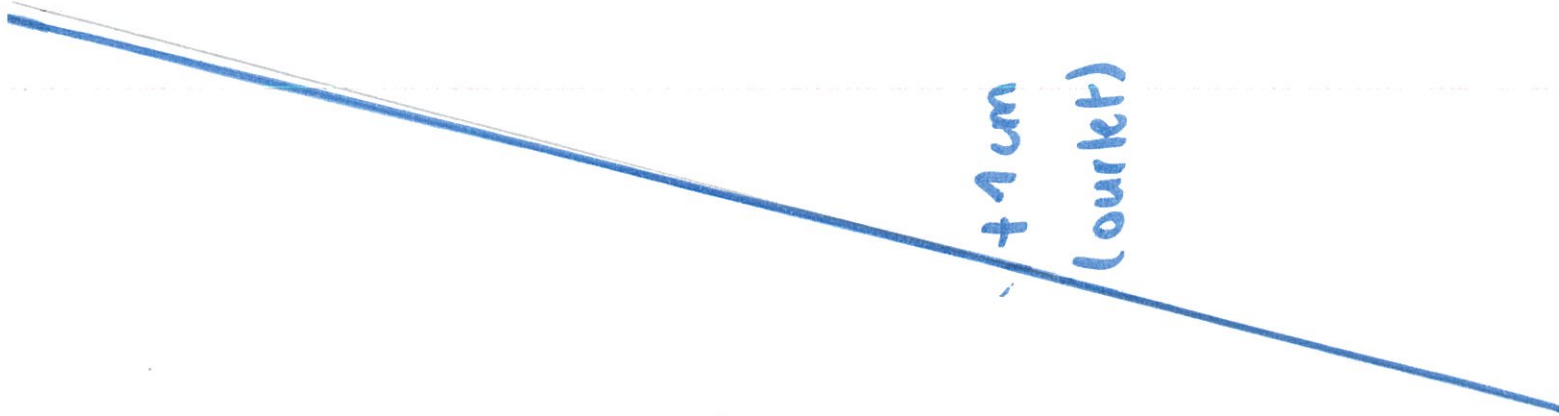
+ 1 cm (outlet)

C2

D2







TOP AILE  
AILETTE (x2)

+1 cm  
(outlet)

